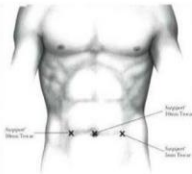
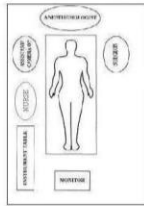


Intraperitoneal Onlay Mesh Repair (IPOM)

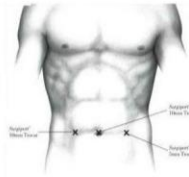


Trocar sites

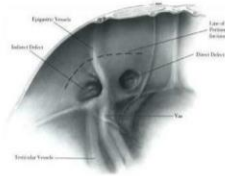


The special mesh is fixed with the transfascial sutures for mesh migration prevention

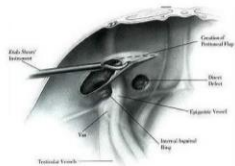
Transabdominal Preperitoneal Repair (TAPP)



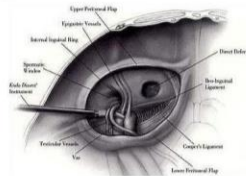
Trocar sites



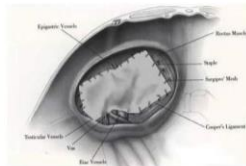
Intraabdominal view



Transection of the peritoneum



Preperitoneal space exposure

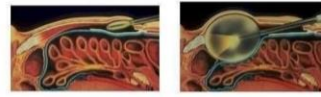


Closure the myopectineal orifice by mesh

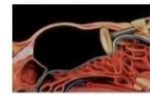


the peritoneum is closing by continuous suture

Totally Extraperitoneal Repair (TEP)



Balloon dissection of the preperitoneal space



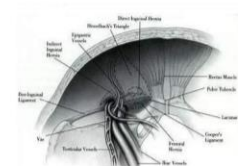
Insufflation



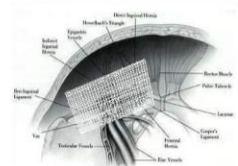
Artificial balloon dissector



Trocar insertion



Extraperitoneal visualization after hernial sac reduction or transection



Mesh application

Reference

Laparoscopic Inguinal Hernia: Garth H. Ballantyne

Laparoscopic Inguinal-Femoral: Hernia Repair Philippe Jean Quilici

Techniques in endosurgery, Ethicon Endo-surgery: Edward H. Phillips